



MILES ESTATE AGENTS

10 Cherry Grove Taunton  
TA2 7SH £215,000



A superbly presented and recently refurbished 2 double bedroom end terrace house with refitted kitchen, new decor and flooring throughout and importantly off road parking, ideally situated for access to the train station and Taunton town centre. Lovely enclosed garden and immediately available with NO ONWARD CHAIN. Early viewing recommended. Freehold Council Tax Band B EPC : D





## Features:

- Entrance hall
- Cosy sitting room
- Good size dining room
- Refitted kitchen
- 2 double bedrooms
- En suite cloakroom
- Bathroom
- Lovely enclosed courtyard garden
- 2 useful stores
- Off road parking
- Freehold
- NO ONWARD CHAIN
- Council Tax Band B
- EPC : D



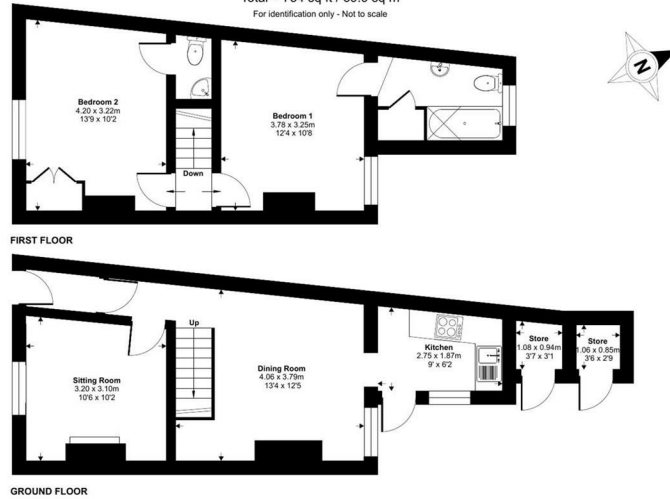
## Cherry Grove, Taunton, TA2

Approximate Area = 735 sq ft / 68.2 sq m

Outbuildings = 19 sq ft / 1.7 sq m

Total = 754 sq ft / 69.9 sq m

For identification only - Not to scale



Energy Efficiency Rating		
	Current	Potential
Very energy efficient - lower running costs		
(92 plus) <b>A</b>		<b>87</b>
(81-91) <b>B</b>		
(69-80) <b>C</b>		<b>60</b>
(55-68) <b>D</b>		
(39-54) <b>E</b>		
(21-38) <b>F</b>		<b>G</b>
(1-20) <b>G</b>		
Not energy efficient - higher running costs		
England & Wales		EU Directive 2002/91/EC

Floor plan produced in accordance with RICS Property Measurement 2nd Edition, incorporating International Property Measurement Standards (IPMS2 Residential). © rchecom 2025. Produced for Miles Alexander Limited T/A Miles Estate Agents. REF: 1297959



Viewings strictly through the selling agents:

**Miles Estate Agents**

2 Piffin Lane, Bishops Lydeard, Taunton,  
Somerset, TA4 3AS

**Tel: 01823 470 500**

[lydeard@milesestateagents.co.uk](mailto:lydeard@milesestateagents.co.uk)

[www.milesestateagents.co.uk](http://www.milesestateagents.co.uk)

**rightmove** 

**OnTheMarket.com** 

**MILES ESTATE AGENTS**

**BEST**  
ESTATE AGENT GUIDE  
2019 : EXCEPTIONAL  
SALES